



Rain and Mountain Snow Monday, A Significant Winter Storm Begins Late Thursday

KEY POINTS

- Possible light snow as low as 1,500 feet in Humboldt and Del Norte counties Monday
- Falling snow levels Thursday through the weekend
- Strong winds in Humboldt and Del Norte counties late Wednesday and Thursday
- Major risk of snow impacts beginning Friday

CHANGES FROM PREVIOUS BRIEFING

- Upgraded Friday to Major Risk due to changes in timing of heavy snow
- Moderate Risk for Humboldt Wednesday for periods of heavy rainfall
- Moderate Risk Sunday for potential lingering low elevation snowfall
- Increased confidence in Major snow impacts

WEATHER RISK OUTLOOK

Risk levels incorporate potential impacts from weather hazards and likelihood of occurrence for a reasonable worse case scenario.

	Mon 2/26	Tue 2/27	Wed 2/28	Thu 2/29	Fri 3/1	Sat 3/2	Sun 3/3
Del Norte County Crescent City, Gasquet	Mountain Snow Rain	Light Rain	Rain	Rain Snow Wind	Rain Snow Wind	Snow	Snow
Humboldt County Eureka, Fortuna, Willow Creek	Mountain Snow Rain		Rain	Rain Snow Wind	Rain Snow Wind	Snow	Snow
Trinity County Weaverville, Hayfork	Rain Mountain Snow		Light Rain	Rain Snow Wind	Snow Wind	Snow	Snow
Mendocino County Ukiah, Fort Bragg	Rain Light Mountain Snow		Light Rain	Rain Snow Wind	Rain Snow Wind	Snow	Snow
Lake County Clearlake, Lakeport	Rain Light Mountain Snow		Light Rain	Rain Snow Wind	Rain Snow Wind	Snow	Snow

Risk Levels

Little to None

Minor

Moderate

Major

Extreme

DETAILS

Del Norte County, Humboldt County and Trinity County

**Impacts:**

- Difficult travel over mountain passes.
- Increased chance of chain requirements.

Timing:

- Through Monday evening.

Confidence:

- Snow levels will be quickly dropping as precipitation fades.

Up to 30% chance for 1 inch of snow for Collier Tunnel and Berry Summit on Monday

Humboldt County, Del Norte County, Trinity County, Mendocino County, Lake County

**Impacts:**

- Mountain road closures and chain controls likely
- Increased risk of power outages due to heavy snow on trees.
- Increased risk of tree damage due to heavy snow on trees.

Timing:

- Thursday

Confidence:

- Snow levels quickly drop Thursday PM and through the weekend
- Potential for major impacts for lower elevations late Friday through Saturday

Timing of cold air may allow for some valley floor snowfall in Humboldt

Del Norte County, Humboldt County, Trinity County, Mendocino County, Lake County

**Impacts:**

- Increased risk of power outages.
- Increased risk of tree damage.
- Difficulty controlling high profile vehicles.

Timing:

Late Wednesday through Thursday

Confidence:

- 50 to 70% max 24 hour wind gust to exceed 60 mph on the ridges and some coastal headlands
- 50 to 70% max 24 hour wind gusts to exceed 70 mph for the higher interior ridges

Del Norte County, Humboldt County, Trinity County, Mendocino County, Lake County

**Impacts:**

- Moderate to heavy rain leading to minor nuisance flooding.
- Sharp rises in rivers in Del Norte County

Timing:

- Starting Wednesday afternoon through Thursday
- Spreading south Thursday and Friday.

Del Norte County, Humboldt County, Trinity County, Mendocino County

**Impacts:**

- Very difficult travel conditions with likely chain controls and possible road closures. AND/OR Low visibility due to a combination of wind and heavy snow.
- Blowing snow and snow drifts causing hazardous travel.
- Hazardous travel conditions due to slick, snow covered roads.
- Dangerous travel conditions. Extended delays and highway closures likely. AND/OR Significant reduction in visibility with whiteout conditions at times.

Timing:

Friday through Saturday

Confidence:

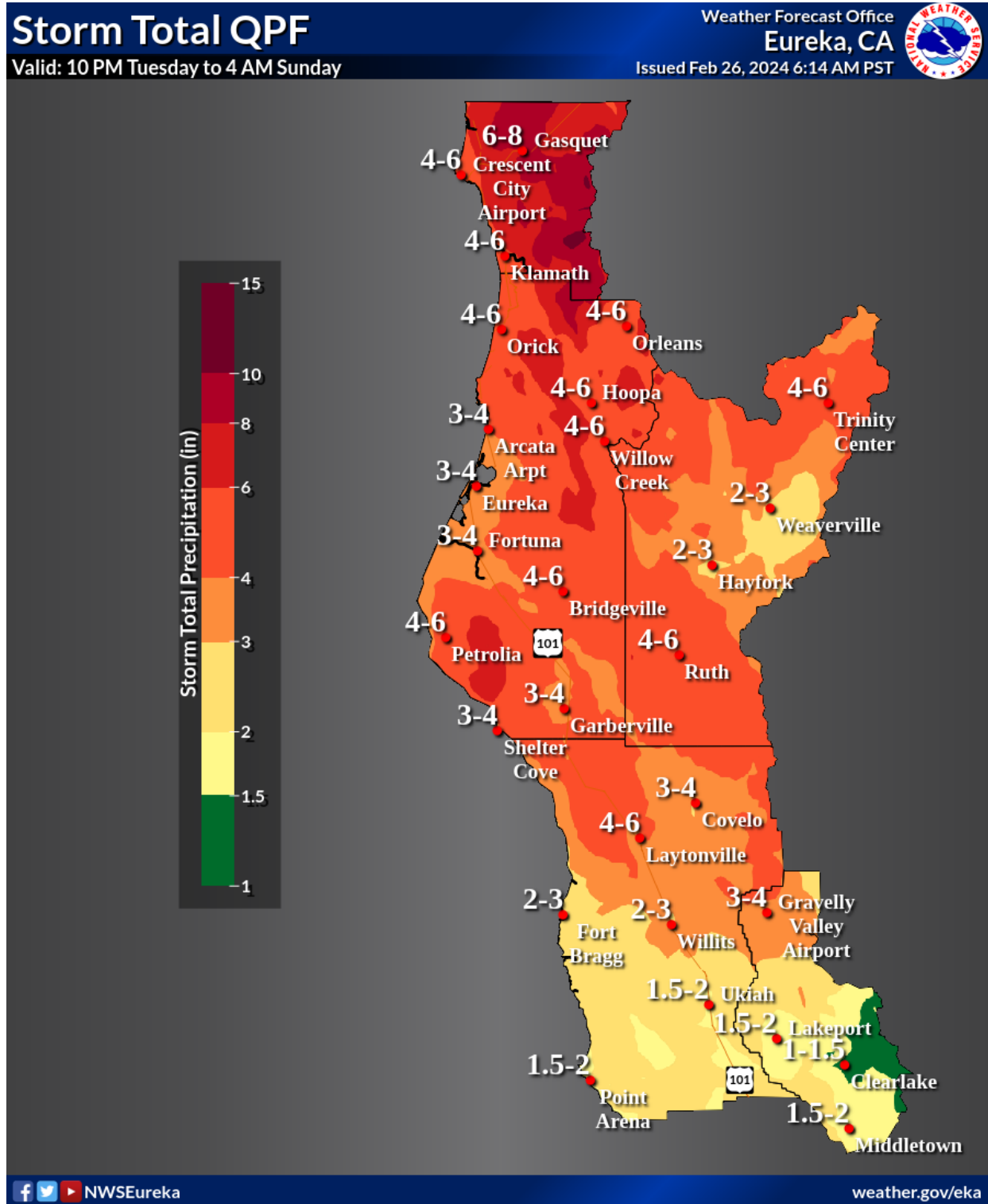
- Growing confidence (45 to 75%) for 2-3 feet of snow over Collier Tunnel and Berry Summit

FOR MORE INFORMATION

For the latest forecast updates, visit weather.gov/eureka.

If you have questions or would like to submit weather reports, photos, or to unsubscribe from these briefings, email nws.eureka@noaa.gov or call (707) 443-6484.

GRAPHICS



Likely Storm Total Rain

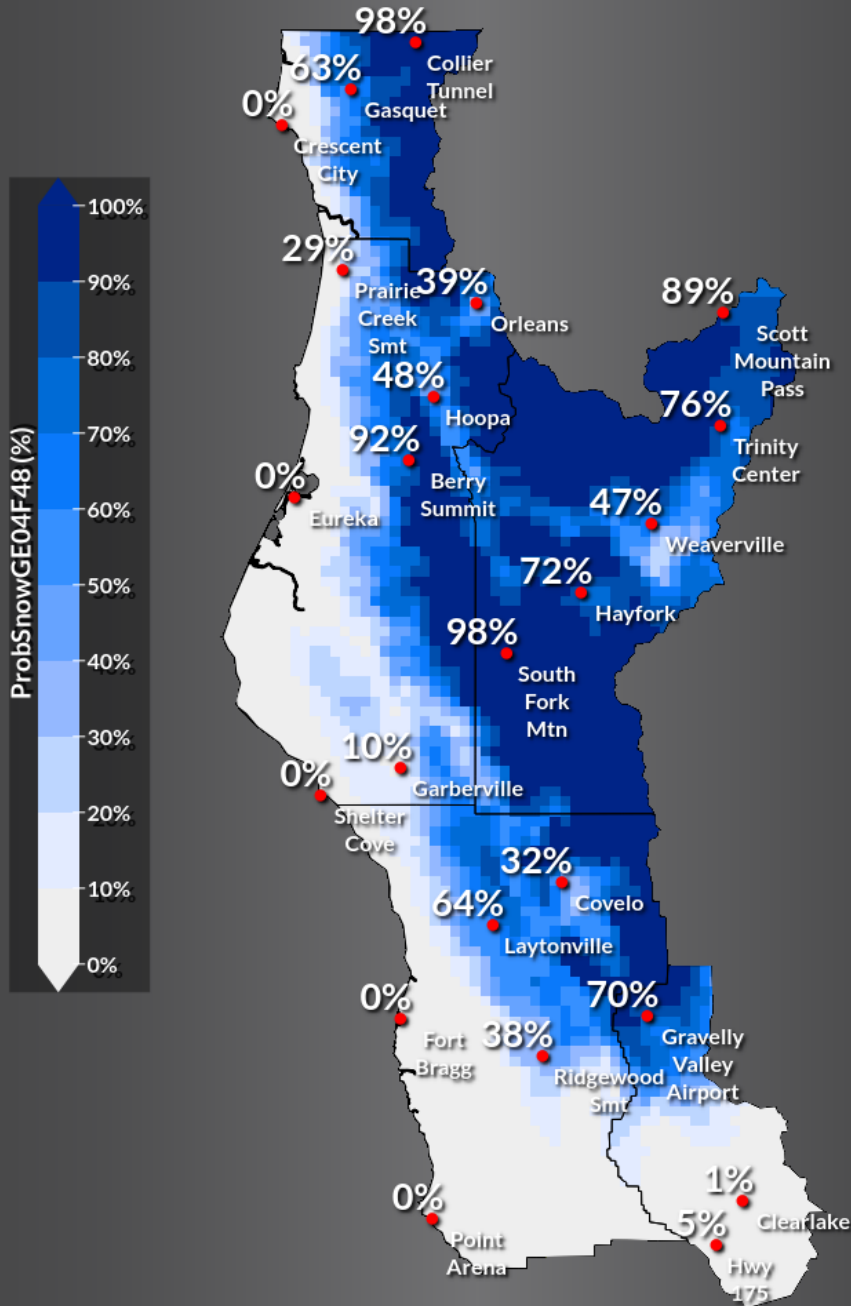
Probability of >4 in of Snow

Weather Forecast Office
Eureka, CA



Valid: 4 AM Friday to 4 AM Sunday

Issued Feb 26, 2024 6:18 AM PST



Snow Probability

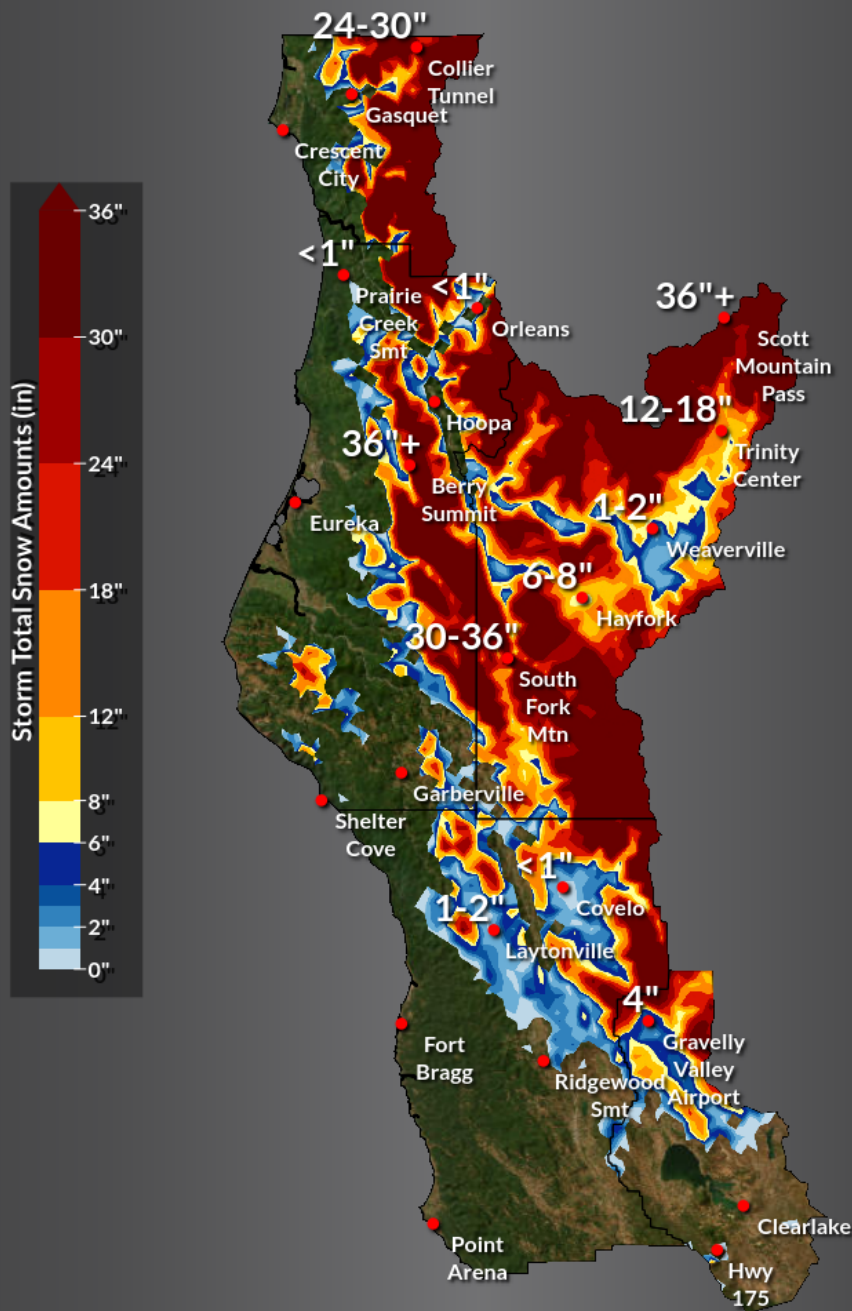
Storm Total Snowfall

Weather Forecast Office
Eureka, CA

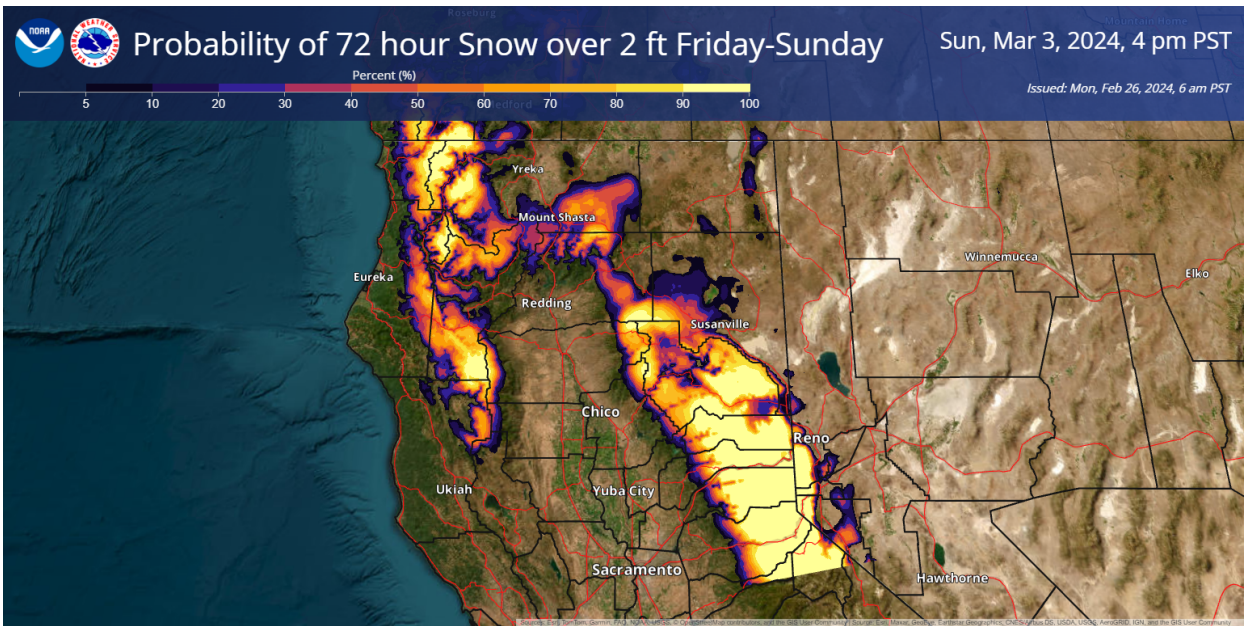


Valid: 10 PM Tuesday to 4 AM Sunday

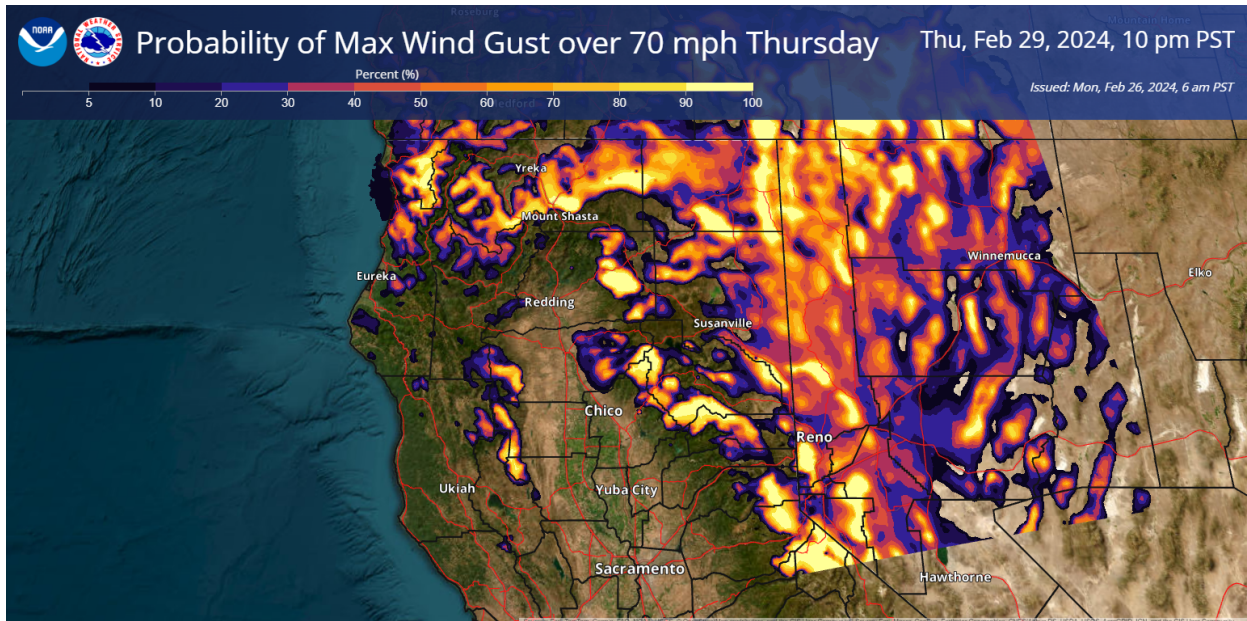
Issued Feb 26, 2024 6:15 AM PST



Possible Storm Total Snow



Snow Probability



Wind Gust Probability Thursday

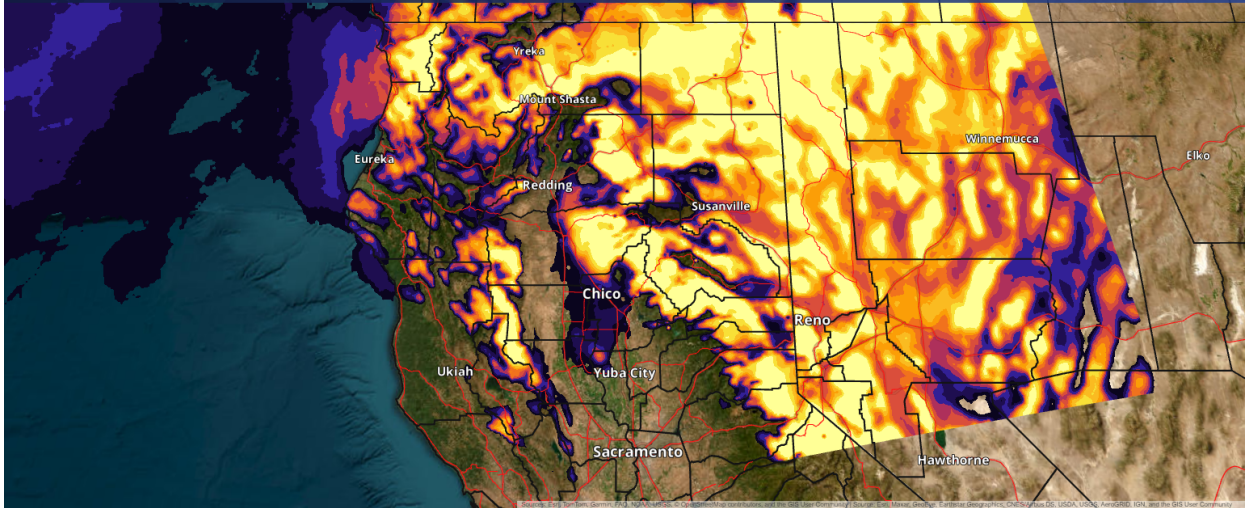


Probability of Max Wind Gust over 60 mph Thursday

Thu, Feb 29, 2024, 10 pm PST



Issued: Mon, Feb 26, 2024, 6 am PST



Wind Gust Probability Thursday